

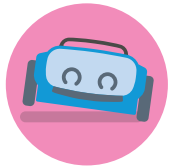


Driven by Color.

Speed into STEAM with indi—the most approachable, entry-level, learning robot for kids. indi inspires imaginative play-based learning by empowering kids to design and build their own mazes while teaching critical problem-solving and computational thinking skills. With its on-board color sensor and color cards, indi provides endless opportunities to rev kids’ creativity with or without the need of an app. Build custom mazes, solve puzzles, and take control of the wheel to drive. Teach coding concepts to beginners and kick programming into high gear with even more options to spark interest in computer science in the free Sphero Edu Jr app. Buckle up and watch indi go!

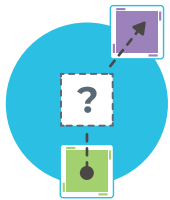


KEY FEATURES & BENEFITS



Screenless Play & Learning

Learn the basics of STEAM, programming, and computational thinking through hands-on, interactive play. Solve puzzles or create and navigate colored mazes that instruct indi how to move and operate.



Solve Puzzles

Solve puzzles or create your own with the Beginner’s Guide to Programming Activity Book.



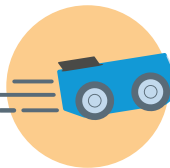
Design & Build Mazes

Problem-solve just like an engineer and design any maze imaginable.



Learn to Program

Learn the basics of programming with the color cards or level up with Sphero’s all new drag and drop blocks in the Sphero Edu Jr app.



Drive Control

Take control and drive indi with the Sphero Edu Jr app.

WHAT’S IN THE BOX?

- 1 robot
- 1 charging cable
- 30 color cards (colored cards that instruct indi how to move and operate)
- 2 decorative sticker sheets to customize indi
- 1 Beginner’s Guide to Programming Booklet for indi
- 500+ individual pieces of adhesive tape to secure color cards



TECH SPECS

- Max top speed: ~1.6 m/s
- Bluetooth version: Bluetooth Low Energy (BLE)
- Bluetooth range: 30 ft (10m)

INTRODUCING SPHERO EDU JR™



Control how indi reacts to the world through intuitive yet powerful programming blocks or enhance computational thinking skills by creating new patterns and solving puzzles.