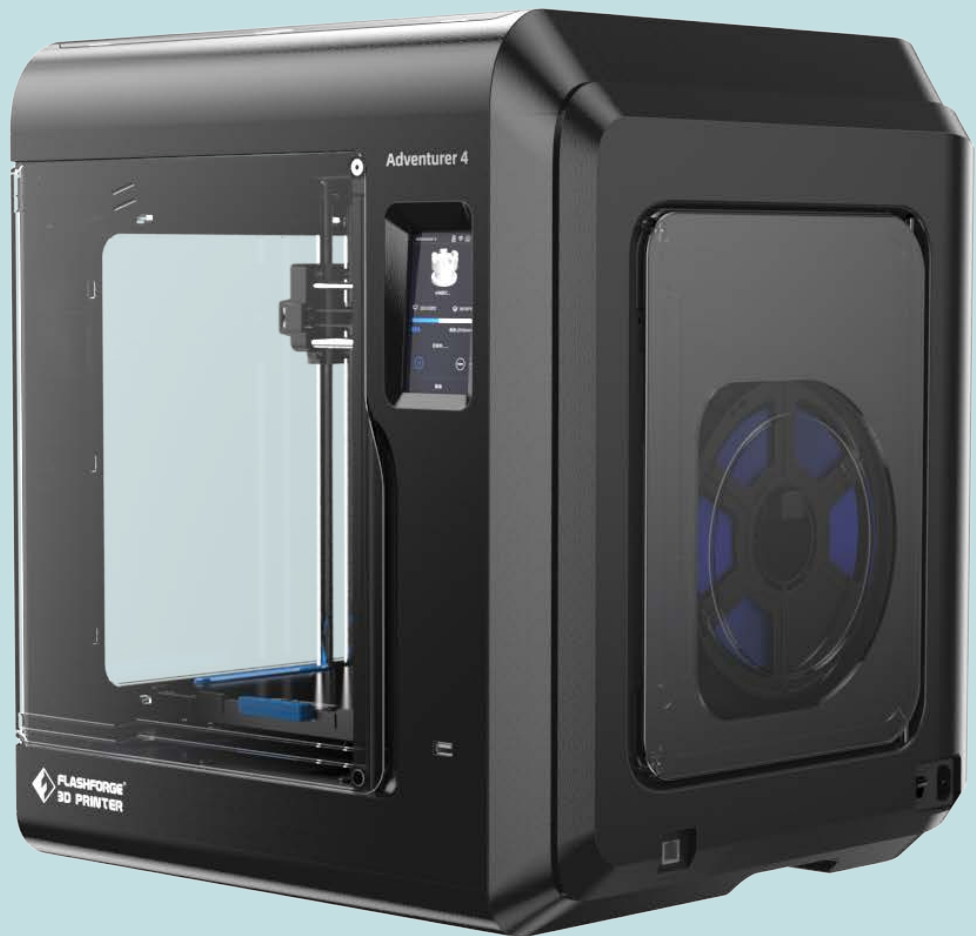


# Adventurer 4 Series

Exclusively smart and efficient 3D printer



Adventurer 4/ Adventurer 4 Lite

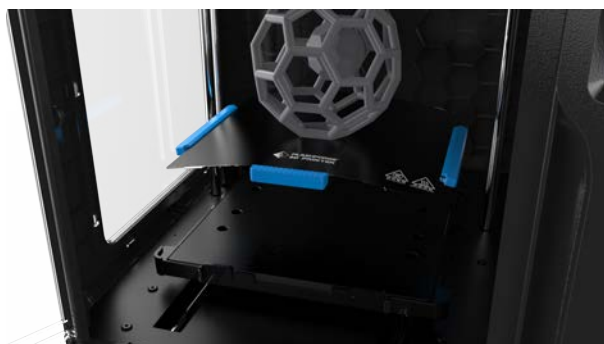


Adventurer 4 has real leveling-free design of platform and larger printing size, combining new slicer which could easily monitor and manage multiple 3D printer. To integrate interest, daily life and working efficiency with intelligent printing experience for family consumers, educators and office users. Speed up for a better life!

# High-efficiency&Plug-N-Play

Adventurer 4

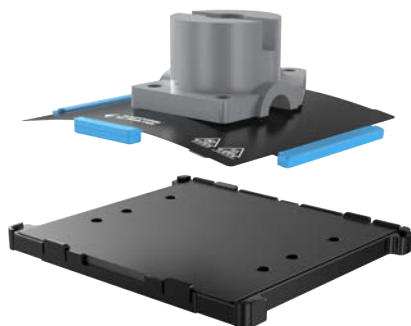
## ■ Leveling Free Platform



Real auto-level platform: Applying CNC made bottom frame as mounting base level ; 8 mm super-flat aluminum plate ensures the platform flatness; The whole flatness difference is less than 0.15 mm; Excellent first-layer printing quality and save the time to adjustment.

## ■ Remove models quickly

Magnetic adsorption platform, double holders bending the spring plate and take down models within 5 seconds.

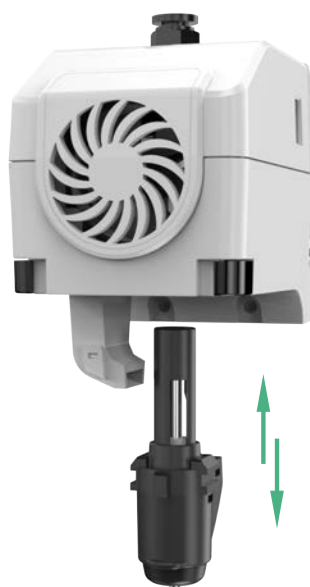


Note: adventurer 4 lite is a glass build plate

## ■ Removable Nozzle

Quickly detachable nozzle with patented buckle design. Only 3 seconds, tool free, easier for replacement and maintenance. More easier to change and maintain.

60 seconds heating up to 200 degree.



## Wide range of application coverage

- Larger printing size: 220\*200\*250mm
- Built-in 1kg filament spool holder
- Different nozzle choice: 0.3/0.4/0.6mm.  
Choose details and timeliness as you wish
- 240/265 degree nozzle  
Match with various filaments:  
PLA/PETG/ABS/PC/PLA-CF/PETG-CF
- Compatible with third-party filament



### PLA-SE

Easy to print and good surface.



### PLA-GALAXY MATTE BLACK

Easy to print and has Starry sky texture matte surface.



### PLA-CF

Wonderful smooth surface and enhanced strength.



PC: High strength & High temperature resistant

PETG: High transparency & wonderful toughness.



## Multi-function escort



Flashprint could go on sort management and pin management for device; printing work are collected in alignment; improve management efficiency of multi-device.

- Continue printing after recovery from power failure
- Detection sensor for lacking filament
- HD Built-in camera monitoring (Adventurer 4 only).
- Remote printing control by Wi-Fi or Ethernet
- New Flashprint support multi-device on-line control, managing printers in high efficiency.
- Remote-control function handle exceptions while printing
- Energy-saving mode: only 1KWH power consumption when standby overnight.

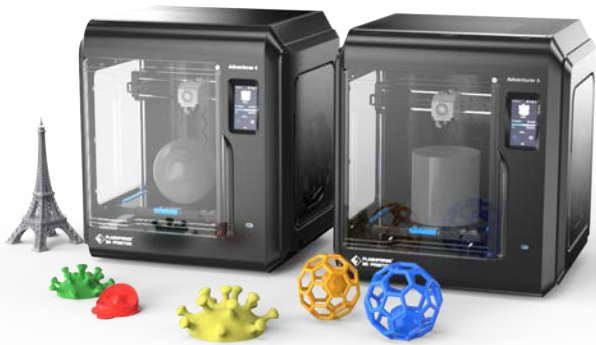
## Interaction friendly and safe

- 45dB silent printing suitable for home and class use
- 4.3 inch high-sensitivity touchscreen to operate
- Fully-enclosed housing to lower the possibility of injury caused by mechanical movement
- HEPA 13 high-filter could filter 99% TVOC powder and activated charcoal filter printing smell (Designed to silently remove nano-particles)



Note: mandatory for education (Adventurer 4 only)

# Application cases



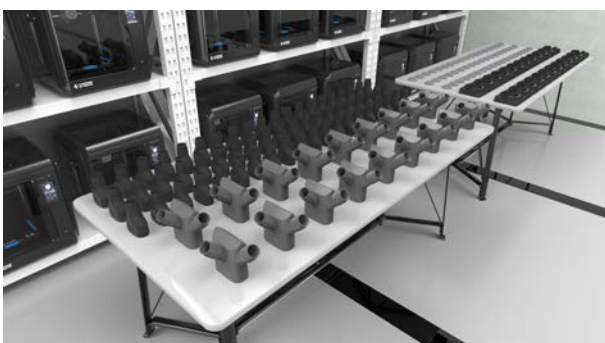
Education: applicable of K-12 education; 3D design and 3D printing teaching and training



Home user : personal player, hobbyist could print parts for home



Office: designers, engineers could print part to test the rationality of designed models



Small business: produce samples in small scale production

# Specification

Name	Adventurer 4	Adventurer 4 Lite
Extruder quantity	1	1
Printing precision	±0.1 mm (test of 100mm cube)	±0.1 mm (test of 100mm cube)
Position precision	X/Y axis: 0.011 mm; Z axis: 0.0025 mm	X/Y axis: 0.011 mm; Z axis: 0.0025 mm
Layer thickness	0.1~0.4 mm	0.1~0.4 mm
Build size	220 x 200 x 250 mm	220 x 200 x 250 mm
Nozzle diameter	0.4 (default) 0.6/0.3 mm (optional)	0.4 (default) 0.6/0.3 mm (optional)
Printing speed	10~150mm/s	10~150mm/s
Highest extruder temperature	265°C/240°C	240°C/(265°C is optional)
Filament type	ABS/PLA/PC/PETG/PLA-CF/PETG-CF	ABS/PLA (according to the nozzle)
Power supply	AC100-240V/DC 24V/13.3A,320W	AC100-240V/DC 24V/13.3A,320W
Device size	500 (L) *470 (W) *540 (H) mm	500 (L) *470 (W) *540 (H) mm
Packaging size	580 (L) *570 (W) *630 (H) mm	580 (L) *570 (W) *630 (H) mm
Slicing software	Flashprint	Flashprint
Input/Output file type	Input: 3MF/STL/OBJ/FPP/BMP/ PNG/JPG/JPEG File; Output: GX/ G File	Input: 3MF/STL/OBJ/FPP/BMP/ PNG/JPG/JPEG File; Output: GX/ G File
Printing connectivity	USB Disk/ WIFI/ Ethernet	USB Disk/ WIFI
Certification	CE / FCC / RoHS	CE / FCC / RoHS
Working environment	15-30°C	15-30°C
Compatible operating system	Win xp/Vista/7/8/10、 Mac OS、 Linux	Win xp/Vista/7/8/10、 Mac OS、 Linux
Compatible slicing software	Flashprint, Cura, Simplify 3D (need setting)	Flashprint, Cura, Simplify 3D(need setting)
Max. Bed Heating Temperature	110 degree	110 degree
Auxiliary leveling	Free off leveling	Free off leveling
Filament running out reminding	✓	✓
Continue last printing when power off	✓	✓
Touch LCD screen	4.3inch	4.3inch
Remote camera watching	✓	×
Air filter net	HEPA 13	×
Magnetic printing bed	✓	×
Glass printing bed	×	✓
Cloud printing	✓	✓